

WHO ARE WE?



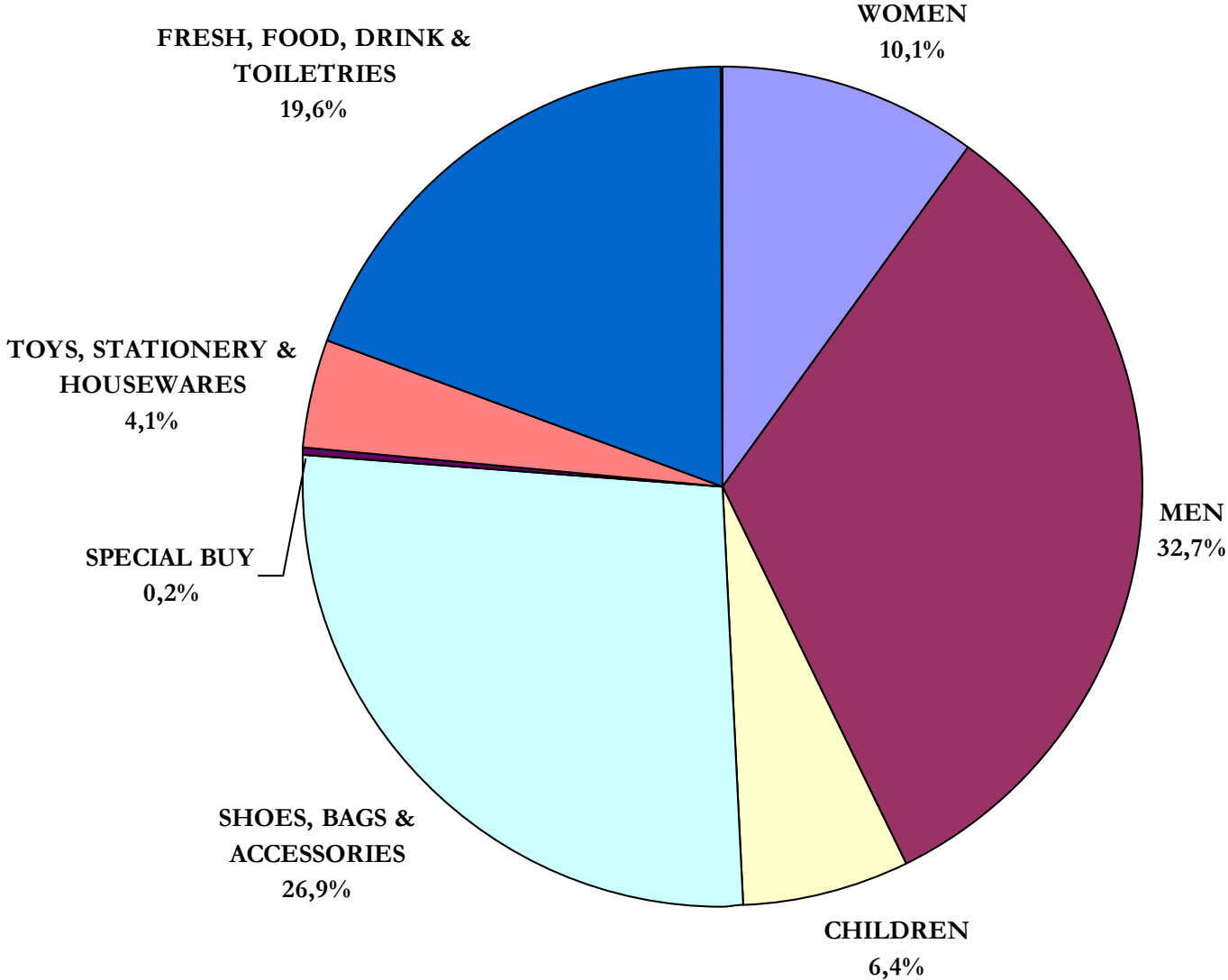
- One of the largest department store operators in Indonesia
- Established in 1978
- Market leader in middle-low and lower retail segment
- Offers full range of clothing, shoes & bags, toys & stationery, housewares and supermarket
- Operates 119 stores in 54 major cities with total gross selling space of 994,441 sqm
- Survived during the worst period of crisis and continues to record strong growth

SHAREHOLDING INFO



- Went public in July 1996
- Outstanding shares : 7,096 million
- Market capitalization : IDR 12.6 trillion or USD 886.7 mn (as of 31 March 2019)
- Ownership structure :
 - PT Ramayana Makmur Sentosa : 55.88%
 - Paulus Tumewu : 3.66%
 - Free float : 40.46%
- Payout ratio :
 - 2014 : 55% of 2013 net profit
 - 2015 : 54% of 2014 net profit
 - 2016 : 61% of 2015 net profit
 - 2017 : 60% of 2016 net profit
 - 2018 : 66% of 2017 net profit

WHAT WE SELL (3M19)

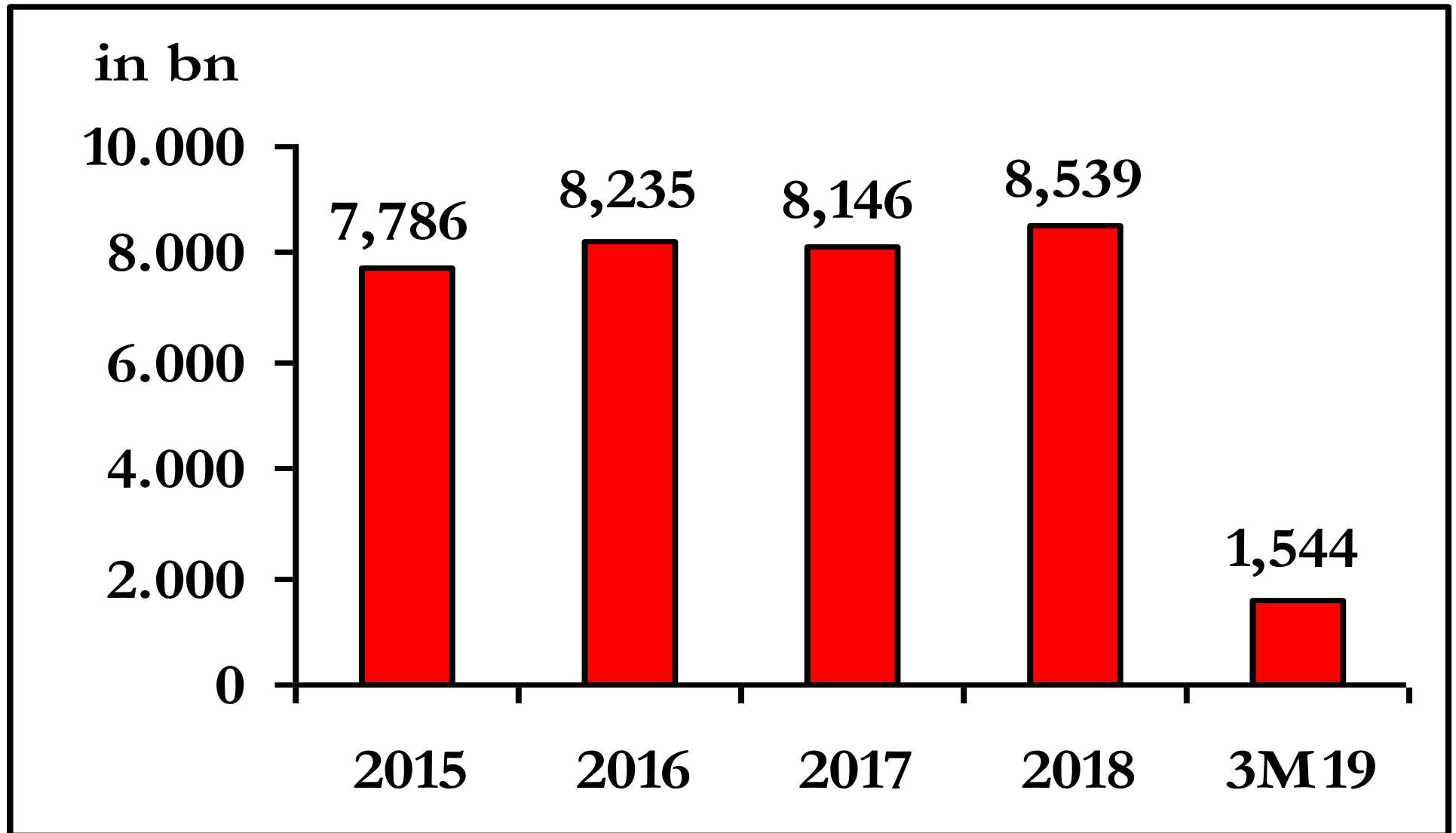


GROSS MARGIN

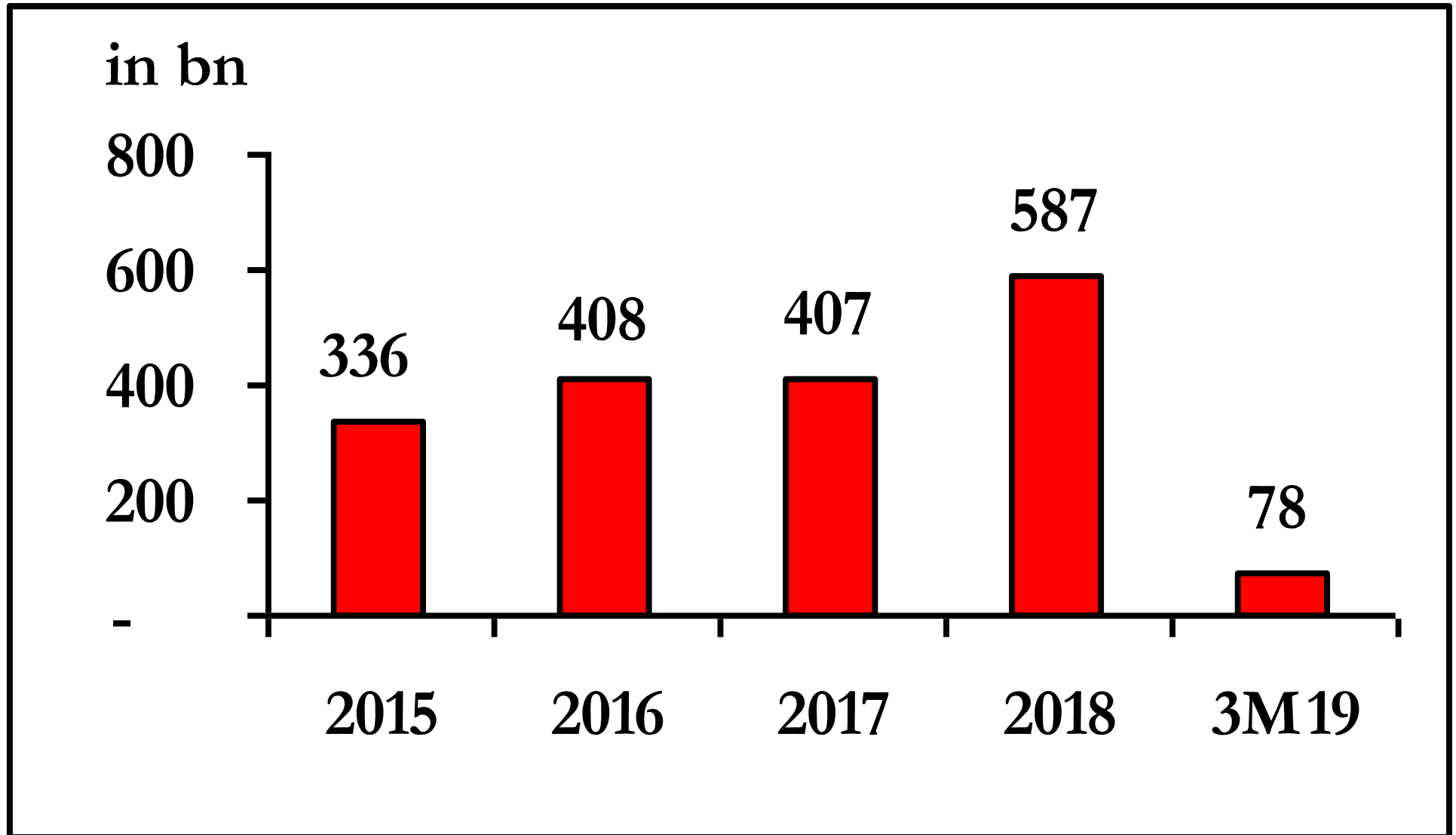


in %	2017	2018	3M19
Women	33.1%	34.7%	33.7%
Men	30.5%	31.7%	31.5%
Children	37.2%	39.7%	37.1%
S. B. A.	28.1%	29.6%	28.8%
Special Buy	32.8%	22.0%	9.9%
Clothing	30.9%	32.3%	31.3%
Toys & Stationery	23.1%	25.7%	24.6%
Housewares	21.7%	24.6%	23.5%
Home	22.2%	24.9%	23.9%
Supermarket	6.3%	7.9%	7.9%
Total	25.7%	28.1%	26.4%

NET SALES



NET PROFIT



FINANCIAL HIGHLIGHTS



	2017		2018		Vs LY
Sales	8,146	100.0%	8,539	100.0%	4.8%
Gross profit	2,212	27.2%	2,507	29.4%	13.3%
Operating expenses	1,856	22.8%	1,899	22.2%	2.3%
Operating profit/EBIT	377	4.6%	607	7.1%	61.1%
Net profit	407	5.0%	587	6.9%	44.4%

Amount in Rp bn, unless otherwise stated

	3M18		3M19		Vs LY
Sales	1,520	100.0%	1,544	100.0%	1.6%
Gross profit	416	27.3%	444	28.7%	6.8%
Operating expenses	425	28.0%	428	27.7%	0.6%
Operating profit/EBIT	-7	-0.5%	42	2.7%	673.3%
Net profit	15	1.0%	78	5.0%	428.2%

COMPETITION



- Small organized regional retailers, such as :
 - Borobudur (Greater Jakarta)
 - Yogya (West Java)
 - Sri Ratu (Central Java)
 - Hardy's (Bali)
 - Suzuya (Sumatra)
- Trade centers, mostly in Greater Jakarta
- Mini markets

CURRENT PRESENCE & EXPANSION PLAN



Greater Jakarta	46	stores	:	333,471	sqm	(33.5%)	Sumatera	21	stores	:	204,472	sqm	(20.6%)
West Java	14	stores	:	123,342	sqm	(12.4%)	Kalimantan	8	stores	:	83,806	sqm	(8.4%)
Central Java	8	Stores	:	54,166	sqm	(5.4%)	Bali, NT, Maluku	5	stores	:	43,381	sqm	(4.4%)
East Java	12	stores	:	101,845	sqm	(10.2%)	Sulawesi	3	stores	:	26,770	sqm	(2.7%)
Total Java	80	stores	:	612,824	sqm	(61.5%)	Papua	2	stores	:	23,188	sqm	(2.4%)
									Total outside Java	39	stores	:	381,617	sqm	(38.5%)

HIGHLIGHTS / PROBLEMS

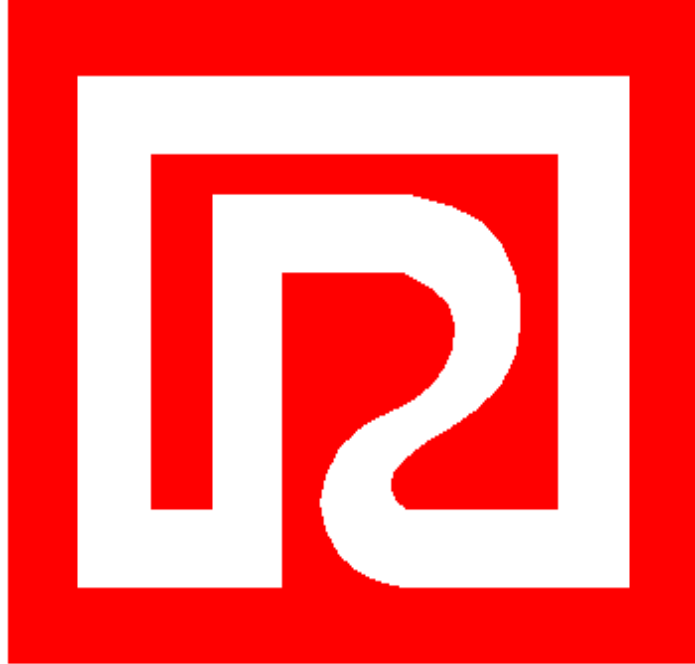


- A mild sign of recovery of export sector in commodities has not yet translated into strong sales performance.
- Down sizing supermarket store size to optimize productivity level.
- Reorganize tenant mix of a bigger outlet to promote concept of life style mall with more F&B tenants, cinema, and specialty shop within shop, in order to increase traffic into store and to attract a slightly higher customer segment.

PROSPECT



- Serving a huge prosperous population base in middle, middle to low income segment.
- Consumer demand in middle and middle to low segment continues to be strong if economic conditions improve.
- Projections of Indonesia's positive economic condition for the next years.
- Overseas remittance for estimated of 4.5 to 5 million TKI's expect to increase or remain stable.



PT. RAMAYANA LESTARI SENTOSA, TBK

Jl. K.H. Wahid Hasyim 220 A- B

Tanah Abang, Jakarta Pusat, 10250

Phone : +62 21 3924066, 3914566

Email : corporate@ramayana.co.id

The latest Annual Report can be downloaded at :

<http://corporate.ramayana.co.id/index.php/en/investor-relation-2/financial-information/ar>

The latest Presentation & Mini Booklet can be downloaded at :

<http://corporate.ramayana.co.id/index.php/en/investor-relation-2/financial-information/prstnmnb>

RAMAYANA SALES TREND & PROJECTION (UNAUDITED)

Projected Net Sales - 2019

MONTH	MONTHLY		QUARTERLY		CUMMULATIVE	
	(Rp bn)	(%)	(Rp bn)	(%)	(Rp bn)	(%)
Jan	575.6	6.5%			575.6	6.5%
Feb	468.9	5.3%			1,044.5	11.8%
Mar	559.5	6.3%	1,604.0	18.1%	1,604.0	18.1%
Apr	624.5	7.1%			2,228.5	25.2%
May	1,926.9	21.8%			4,155.4	47.0%
Jun	1,235.3	14.0%	3,786.7	42.8%	5,390.7	60.9%
Jul	567.6	6.4%			5,958.3	67.3%
Aug	470.5	5.3%			6,428.8	72.7%
Sep	489.7	5.5%	1,527.8	17.3%	6,918.5	78.2%
Oct	493.2	5.6%			7,411.7	83.8%
Nov	530.6	6.0%			7,942.3	89.8%
Dec	905.2	10.2%	1,929.0	21.8%	8,847.4	100.0%
TOTAL	8,847.4	100.0%	8,847.4	100.0%		

* relative to full year projection

Actual Net Sales - 2019

MONTH	SALES	SSG	GROWTH	CUMMULATIVE	
	(Rp bn)	(YTD)	(YTD)	(Rp bn)	(%)
Jan	562.1	3.0%	4.2%	562.1	6.4%
Feb	449.6	0.7%	1.8%	1,011.8	11.4%
Mar	529.4	0.5%	1.4%	1,541.2	17.4%
Apr					
May					
Jun					
Jul					
Aug					
Sep					
Oct					
Nov					
Dec					
TOTAL	1,541.2				

* relative to full year projection

SSSG Projection : 3.70%

Actual Net Sales - 2018

MONTH	SALES	SSG	GROWTH	CUMMULATIVE	
	(Rp bn)	(YTD)	(YTD)	(Rp bn)	(%)
Jan	539.0	-7.1%	-5.4%	539.0	6.5%
Feb	454.5	-1.7%	0.3%	993.5	12.1%
Mar	525.6	0.3%	2.5%	1,519.0	18.5%
Apr	580.5	-0.8%	2.0%	2,099.5	25.5%
May	1,038.3	9.3%	12.4%	3,137.8	38.1%
Jun	2,042.4	1.9%	3.9%	5,180.2	62.9%
Jul	553.0	1.3%	3.3%	5,733.2	69.6%
Aug	462.9	1.8%	3.9%	6,196.1	75.3%
Sep	483.5	2.4%	4.5%	6,679.6	81.1%
Oct	474.1	2.2%	4.3%	7,153.7	86.9%
Nov	512.6	2.5%	4.6%	7,666.3	93.1%
Dec	869.1	2.9%	4.8%	8,535.3	103.7%
TOTAL	8,535.3				

* relative to full year projection

For year 2018 :

1. 5 new stores, adding 22.943 sqm
2. 2 Stores closed, reducing 12.257 sqm
3. Idul Fitri/Lebaran fell on 15 June 2018

Actual Net Sales - 2017

MONTH	SALES	SSG	GROWTH	CUMMULATIVE	
	(Rp bn)	(YTD)	(YTD)	(Rp bn)	(%)
Jan	569.6	4.5%	3.9%	569.6	
Feb	421.0	-0.1%	-1.1%	990.6	
Mar	491.2	1.0%	-0.2%	1,481.8	18.2%
Apr	576.0	4.4%	3.1%	2,057.8	
May	731.0	4.8%	4.1%	2,788.8	
Jun	2,195.1	14.4%	14.2%	4,983.9	43.0%
Jul	563.6	-0.3%	-0.4%	5,547.5	
Aug	417.1	-0.3%	-0.4%	5,964.6	
Sep	427.4	-0.7%	-0.7%	6,392.0	17.3%
Oct	468.8	-0.9%	-0.9%	6,860.8	
Nov	467.2	-1.3%	-1.3%	7,328.0	
Dec	813.6	-1.2%	-1.1%	8,141.6	21.5%
TOTAL	8,141.6				

* relative to full year projection

For year 2017 :

1. 6 new stores, adding 30.993 sqm
2. 3 Stores closed, reducing 13.774 sqm
3. Idul Fitri/Lebaran fell on 24 June 2017

Actual Net Sales - 2016

MONTH	SALES	SSG	GROWTH	CUMMULATIVE	
	(Rp bn)	(YTD)	(YTD)	(Rp bn)	(%)*
Jan	548.4	5.5%	5.8%	548.4	
Feb	453.4	2.0%	2.1%	1,001.8	
Mar	482.3	-0.1%	-0.5%	1,484.1	18.0%
Apr	512.4	1.5%	0.8%	1,996.5	
May	681.8	4.3%	3.7%	2,678.3	
Jun	1,686.6	27.5%	27.0%	4,364.9	35.0%
Jul	1,206.3	7.7%	6.9%	5,571.3	
Aug	414.5	7.2%	6.3%	5,985.8	
Sep	449.6	7.1%	6.1%	6,435.4	25.2%
Oct	489.8	6.5%	6.1%	6,925.2	
Nov	501.7	6.2%	5.7%	7,426.8	
Dec	801.6	6.3%	5.7%	8,228.4	21.8%
TOTAL	8,228.4				

* relative to full year projection

For year 2016 :

1. 2 new stores, adding 13.979 sqm
2. 3 Stores closed, reducing 23.316 sqm
3. Idul Fitri/Lebaran fell on 6 July 2016

Actual Net Sales - 2015

MONTH	SALES	SSG	GROWTH	CUMMULATIVE	
	(Rp bn)	(YTD)	(YTD)	(Rp bn)	(%)*
Jan	518.7	-5.5%	-5.8%	518.7	
Feb	463.3	0.5%	0.2%	982.0	
Mar	510.2	-3.3%	-3.5%	1,492.2	19.2%
Apr	489.5	-3.9%	-4.0%	1,981.7	
May	602.8	-4.4%	-4.4%	2,584.6	
Jun	853.2	-1.2%	-1.0%	3,437.8	25.0%
Jul	1,775.1	-4.2%	-4.0%	5,212.9	
Aug	418.3	-4.8%	-4.3%	5,631.2	
Sep	433.1	-4.1%	-3.4%	6,064.3	33.7%
Oct	466.6	-3.7%	-2.9%	6,530.9	
Nov	497.7	-3.5%	-2.7%	7,028.6	
Dec	755.7	-2.7%	-1.9%	7,784.2	22.1%
TOTAL	7,784.2				

* relative to full year projection

For year 2015 :

1. 1 new store, adding 9.715 sqm
2. 3 Stores closed, reducing 22.659 sqm
3. Idul Fitri/Lebaran fell on 17 July 2015

PT Ramayana Lestari Sentosa Tbk. Changes in Space Year to Date 2014

Category	Code	Address	City	G. Space	N. Space	Supermarket	Date	Status	D-Date
Closed	R112	Jl. H. Zaenal Mustofa, No. 253 Kel Cihideung	Tasikmalaya	-8,600	-5,971	Full Supermarket	Jul.13	JIL	Jän.14
Reduced	RB11	Jl. Simpang Lima, Mal Citraland, Lt. 1	Semarang	-1,925	-1,855	None	Nov-93	Private	Jun.14
Reduced	R114	Jl. Bogor Baru Kel Kedaung Jaya	Bogor	-2,000	-1,800	Dry Grocery	Jul.13	JIL	Aug-14
Reduced	R110	Jl. DR. Sutomo, Kel Noyontaan Pekalongan	Pekalongan	-1,660	-1,660	Full Supermarket	May-13	JIL	Aug-14
Closed	RB02	Jl. Dalem Kaum No. 46-52	Bandung	-3,809	-500	None	Oct-88	JIL	Oct-14
Sub-total				-17,994	-11,786				
Total Change				-17,994	-11,786				
End of 2013				1,006,781	732,012				
End of Dec' 2014				988,787	720,226				

PT Ramayana Lestari Sentosa Tbk. Changes in Space Year to Date 2015

Category	Code	Address	City	G. Space	N. Space	Supermarket	Date	Status	D-Date
Closed	R116	Plaza Bangkinang	Bangkinang	-4,400	-3,300	Dry Grocery	Jul.13	Private	Mär.15
Opened	R119	Mall Dinoyo City Square JL. MT Haryono, Kel Dinoyo	Malang	9,715	9,208	SPAR	Jun.15	Owned	Jun.15
Closed	R28	Jl. By-Pass Cikarang, Pasar Baru Cikarang	Bekasi	-7,724	-4,194	Full Supermarket	Aug-95	Government	Nov-15
Closed	R56	Jl. Jend. Sudirman	Pekan Baru	-10,535	-8,395	Full Supermarket	Nov-01	Government	Dec-15
Sub-total				-12,944	-6,681				
Total Change				-12,944	-6,681				
End of 2014				988,787	720,226				
End of Dec' 2015				975,843	713,545				

PT Ramayana Lestari Sentosa Tbk. Changes in Space Year to Date 2016

Category	Code	Address	City	G. Space	N. Space	Supermarket	Date	Status	D-Date
Closed	R84	Jl. Raya Perawang, Kel. Tualang, Kab. Siak	Perawang	-5,462	-3,747	Full Supermarket	Jul.08	JIL	Jän.16
Opened	R120	Jl. Slamet Riyadi, Laweyan, Solo	Solo	9,376	5,743	None	May-16	Owned	May-16
Opened	R121	Jl. Raya Tajur RT 02/02, Sindangsari, Bogor Timur	Tajur	4,603	3,043	SPAR	Jun.16	Owned	Jun.16
Closed	R65	Jl. Aksara No. 2	Medan	-9,008	-6,701	Full Supermarket	May-05	Private	Jul.16
Closed	R95	Jl. Jend. Sudirman	Balikpapan	-8,846	-8,350	None	Dec-10	Private	Jul.16
Sub-total				-9,337	-10,012				
Total Change				-9,337	-10,012				
End of 2015				975,843	713,545				
End of Dec' 2016				966,506	703,533				

PT Ramayana Lestari Sentosa Tbk. Changes in Space Year to Date 2017

Category	Code	Address	City	G. Space	N. Space	Supermarket	Date	Status	D-Date
Closed	R05	Jl. Hasanuddin Bawah Terminal Blok M Mall	South Jakarta	-6,065	-4,699	None	Sep.92	Private	Jän.17
Opened	R122	Jl. Raya Pondok Aren, Pondok Betung, Tangerang	Tangerang	4,007	2,902	None	May-17	Owned	May-17
Opened	R123	Jl. Boulevard kav. 9, Medan Satria, Bekasi	Bekasi	3,113	2,724	None	May-17	Private	May-17
Opened	R124	Jl. Raya Serang no. 19 RT001/RW01, Cikupa	Tangerang	7,740	6,155	SPAR	May-17	JIL	May-17
Closed	R115	Mall Mega Sanur Bulu Kumba, Jl Samratulangi	Bulukumba	-4,300	-4,300	Dry Grocery	Jun.13	Private	Sep.17
Closed	R108	Jl. Raya Bogor, Cililitan, Jakarta Timur	Jakarta	-3,379	-3,379	Dry Grocery	May-13	JIL	Oct-17
Opened	R125	Jl. Matraman Raya No.173-175, Jakarta Timur	Jakarta	8,353	8,007	Full Supermarket	Dec-17	JIL	Dec-17
Opened	R126	Jl. Ir.H. Juanda No.115, Bekasi	Bekasi	4,380	3,936	None	Dec-17	Private	Dec-17
Opened	R127	Jl. BSD Raya Utama, Tangerang (Q Big Mall)	Tangerang	3,400	3,310	None	Dec-17	Private	Dec-17
Sub-total				17,249	14,656				
Total Change				17,249	14,656				
End of 2016				966,506	703,533				
End of 2017				983,755	718,189				

PT Ramayana Lestari Sentosa Tbk. Changes in Space Year to Date 2018

Category	Code	Address	City	G. Space	N. Space	Supermarket	Date	Status	D-Date
Opened	R128	Jl. Alternatif Cibubur Cileungsi Km. 2-3, Jawa Barat	Cibubur	5,836	5,836	None	Apr.18	Private	Apr.18
Opened	R129	Jl. H.M. Joyomartono Bulak Kapal, Bekasi Timur	Bekasi	4,168	4,168	None	Apr.18	Private	Apr.18
Opened	R130	Jl. Sultan Hamengkubuwono IX KM 25, Jakarta Timur	East Jakarta	4,635	4,635	None	May-18	Private	May-18
Closed	R122	Jl. Raya Pondok Aren, Pondok Betung, Tangerang	Tangerang	-4,007	-2,902	None	May-17	Owned	Aug.18
Closed	R73	Jl. Emmy Saefan	Palu	-8,250	-5,669	Full Supermarket	Sep.06	Private	Sep.18
Opened	R131	Jl. Magelang km 9,6, Tridadi, Sleman	Sleman	4,228	3,890	None	Dec-18	Private	Dec-18
Opened	R132	Jl. Pahlawan, Kartoharjo, Kota Madiun, Jawa Timur	Madiun	4,076	3,620	None	Dec-18	Private	Dec-18
Sub-total				10,686	13,578				
Total Change				10,686	13,578				
End of 2017				983,755	718,189				
End of Dec 2018				994,441	731,767				

PT Ramayana Lestari Sentosa Tbk.'s Stores Breakdown per Region (Year to Date)

Region	%	# of Stores	Gross Space (m2)	Net Space (m2)	Gross Space (%)	Net Space (%)	Avg. Gross Space (m2)	Avg. Net Space (m2)
Java	67.2%	80	612,824	453,175	61.6%	61.9%	7,660	5,665
Bali	2.5%	3	30,819	19,494	3.1%	2.7%	10,273	6,498
Sumatera	17.6%	21	204,472	146,797	20.6%	20.1%	9,737	6,990
Kalimantan	6.7%	8	83,806	59,982	8.4%	8.2%	10,476	7,498
Sulawesi	2.5%	3	26,770	23,789	2.7%	3.3%	8,923	7,930
Maluku	0.8%	1	4,979	3,041	0.5%	0.4%	4,979	3,041
Nusa Tenggara	0.8%	1	7,583	5,530	0.8%	0.8%	7,583	5,530
Papua	1.7%	2	23,188	19,959	2.3%	2.7%	11,594	9,980
Total		119	994,441	731,767	100.0%	100.0%	8,357	6,149

Region	%	# of Stores	Gross Space (m2)	Net Space (m2)	Gross Space (%)	Net Space (%)	Avg. Gross Space (m2)	Avg. Net Space (m2)
Java	67.2%	80	612,824	453,175	61.6%	61.9%	7,660	5,665
Outside Java	32.8%	39	381,617	278,592	38.4%	38.1%	9,785	7,143
Total		119	994,441	731,767	100.0%	100.0%	8,357	6,149

Region	%	# of Stores	Gross Space (m2)	Net Space (m2)	Gross Space (%)	Net Space (%)	Avg. Gross Space (m2)	Avg. Net Space (m2)
Greater Jakarta	38.7%	46	333,471	249,697	33.5%	34.1%	7,249	5,428
Rest Java	28.6%	34	279,353	203,478	28.1%	27.8%	8,216	5,985
Outer Island	32.8%	39	381,617	278,592	38.4%	38.1%	9,785	7,143
Total		119	994,441	731,767	100.0%	100.0%	8,357	6,149

PT Ramayana Lestari Sentosa Tbk.'s Stores Breakdown per Status (Year to Date)

Status	%	# of Stores	Gross Space (m2)	Net Space (m2)	Gross Space (%)	Net Space (%)	Avg. Gross Space (m2)	Avg. Net Space (m2)
Owned	21.8%	26	223,869	153,584	22.5%	21.0%	8,610	5,907
Jakarta Inti Land	32.8%	39	369,585	276,737	37.2%	37.8%	9,477	7,096
Government	10.1%	12	97,780	67,151	9.8%	9.2%	8,148	5,596
Private	35.3%	42	303,207	234,295	30.5%	32.0%	7,219	5,578
Total		119	994,441	731,767	100.0%	100.0%	8,357	6,149

Last Update : March 2019

PT Ramayana Lestari Sentosa Tbk.'s List of Stores

NO	CODE	ADDRESS	CITY	REGION	G. SPACE	N. SPACE	SUPERMARKET	OPEN DATE	STATUS
1	C001	Jl. Taman Mini Raya	East Jakarta	Jakarta	7,453	4,950	None	Jul.06	Private
2	R02	Pulo Gadung Trade Center, Jl. Raya Bekasi km 21	Bekasi	Bodetabek	9,000	5,946	Supermarket	Aug.04	Private
3	R06	Jl. Pahlawan No.1000	Serpong	West Java	4,347	4,397	None	Mai.05	Owned
4	R08	Jl. H. Agus Salim No. 34-38	Central Jakarta	Jakarta	3,640	2,309	None	Dez.85	JIL
5	R10	Jl. Pasar Palmerah Lt. 2	West Jakarta	Jakarta	3,537	4,234	Supermarket	Mär.89	Government
6	R11	Jl. Raya Ragunan No. 113, Pasar Minggu	South Jakarta	Jakarta	4,800	4,005	Supermarket	Sep.89	JIL
7	R12	Jl. Pasar Baru No. 69	Central Jakarta	Jakarta	1,854	1,130	None	Sep.89	Owned
8	R13	Jl. Raya Bogor, Pasar Kramat Jati, Lt. 1	East Jakarta	Jakarta	8,325	3,963	Supermarket	Jän.90	Government
9	R14	Jl. Tanjung Duren Barat, Pasar Kopro Lt. 2-3	West Jakarta	Jakarta	6,283	4,384	Supermarket	Nov.90	Government
10	R15	Jl. Dewi Sartika No. 1	Bogor	Bodetabek	9,841	7,855	Supermarket	Okt.90	Private
11	R20	Jl. Ciputat Raya, Plaza Ciputat Raya	Tangerang	Bodetabek	7,794	6,376	Supermarket	Nov.91	Owned
12	R21	Jl. Ir. H. Juanda, Pratama Plaza	Bekasi	Bodetabek	9,342	5,552	Supermarket	Dez.91	JIL
13	R22	Jl. Ragunan, ex Terminal Pasar Minggu	South Jakarta	Jakarta	9,300	6,791	Supermarket	Jän.93	Government
14	R24	Jl. Raya Pondok Gede, samping Terminal	Bekasi	Bodetabek	8,665	5,060	None	Feb.93	Owned
15	R25	Jl. Surya Kencana No. 3	Bogor	Bodetabek	9,936	3,645	None	Okt.93	Government
16	R26	Jl. Merdeka, dekat Terminal Cimone	Tangerang	Bodetabek	10,335	4,831	Supermarket	Jän.96	JIL
17	R29	Jl. Kramat Jaya, Tugu Koja, Tanjung Priok	North Jakarta	Jakarta	8,007	6,839	Supermarket	Dez.95	JIL
18	R30	Jl. Antasari no.1, Plaza Mitra	Banjarmasin	South Kalimantan	7,572	5,644	None	Jun.00	Private
19	R31	Jl. Daan Mogot Raya, Kodim	Tangerang	Bodetabek	9,822	8,069	Supermarket	Jän.96	JIL
20	R32	Jl. Tebet Raya Dalam, Pasar Tebet	South Jakarta	Jakarta	3,404	2,557	Supermarket	Aug.96	Government
21	R33	Jl. Yos Sudarso, Koja Plaza, Tanjung Priok	North Jakarta	Jakarta	5,019	5,559	Supermarket	Aug.96	Private
22	R34	Jl. Margonda Raya, Plaza Depok	Bogor	Bodetabek	13,197	9,552	Supermarket	Okt.96	JIL
23	R35	Jl. Raya Serang, Mal Cilegon	Cilegon	West Java	12,500	12,122	Supermarket	Nov.96	JIL
24	R36	Jl. Jend. A. Yani, Jambu Dua	Bogor	Bodetabek	11,100	8,747	Supermarket	Jän.97	Private
25	R37	Jl. Raya Cibitung	Bekasi	Bodetabek	8,509	6,422	Supermarket	Aug.05	JIL
26	R38	Jl. I Gusti Ngurah Rai, Klender	East Jakarta	Jakarta	8,495	7,358	Supermarket	Nov.00	JIL
27	R39	Jl. Veteran	Purwakarta	West Java	6,170	3,487	Supermarket	Okt.05	Private
28	R40	Jl. Lingkar Luar Barat, Cengkareng Timur	West Jakarta	Jakarta	11,619	6,998	Supermarket	Jul.97	JIL
29	R41	Jl. Pattimura, Sutomo, Pantuan	P. Siantar	North Sumatera	7,767	5,633	Supermarket	Sep.09	Owned
30	R42	Jl. Raya Bogor, Graha Cijantung	East Jakarta	Jakarta	8,740	6,752	None	Nov.97	Private
31	R43	Jl. Raya Jakarta-Bogor, Cibinong	Bogor	Bodetabek	8,418	6,977	Supermarket	Mai.01	Owned
32	R44	Jl. Pondok Raya, Plaza Bintaro, Bintaro	Tangerang	Bodetabek	3,443	3,159	None	Nov.97	Private
33	R45	Jl. Sultan Toha	Jambi	Sumatra Jambi	9,497	7,307	Supermarket	Okt.04	Private
34	R46	Jl. Dr. Muwardi II, Pasar Muka	Cianjur	West Java	7,623	4,136	Supermarket	Dez.99	Government
35	R47	Jl. Lapangan Tembak, Cibubur	Bogor	Bodetabek	3,243	2,386	Supermarket	Jul.03	Owned
36	R48	Jl. R. Intan, Pasar Bawah, Tanjung Karang	Lampung	Sumatra Lampung	10,000	6,996	Supermarket	Nov.99	Government
37	R49	Jl. HOS Cokroaminoto, Ciledug	Tangerang	Bodetabek	11,500	7,825	Supermarket	Jun.05	Owned
38	R50	Jl. Andi Pettarani; Panakukang Mas	Ujung Pandang	South Sulawesi	8,101	7,750	None	Mai.02	Private
39	R51	Jl. Sukarno, Plaza Muara Rapak	Baikpapan	East Kalimantan	9,908	7,924	Supermarket	Sep.03	Government
40	R52	Jl. Pasar Pangkal Pinang, Bangka	Pangkal Pinang	South Sumatera	9,324	7,101	Supermarket	Okt.02	Government
41	R54	Jl. Letkol Iskandar, Kompleks Ilir Barat Permai	Palembang	South Sumatera	13,200	7,625	None	Nov.00	Private
42	R55	Jl. Pulau Irian	Samarinda	East Kalimantan	8,387	6,929	Supermarket	Nov.01	Private
43	R57	Jl. Tanjung Pura	Pontianak	South Kalimantan	12,797	7,469	None	Nov.01	Owned
44	R58	Jl. Sisingamangaraja	Medan	North Sumatera	12,270	6,866	Supermarket	Jul.03	Owned
45	R60	Jl. Gajah Mada, Pasar Simpang 3	Tarakan	East Kalimantan	9,926	8,699	Supermarket	Nov.02	Private
46	R61	Jl. Lalamentik, Floabamora Mal	Kupang	Bali-NT	7,583	5,530	Supermarket	Okt.03	JIL
47	R62	Jl. Iskandar Muda, Plasa Medan Baru	Medan	North Sumatera	8,094	7,633	Supermarket	Okt.03	Private
48	R63	Jl. P. Antasari, Pasar Sentra Antasari	Banjarmasin	South Kalimantan	11,334	7,046	Supermarket	Mai.04	Government
49	R66	Jl. Pemuda	Padang	West Sumatera	11,178	9,633	Supermarket	Apr-10	Owned
50	R67	Jl. Tuparev	Karawang	West Java	14,885	10,126	Supermarket	Jul.05	JIL
51	R68	Jl. Altenatif, Cileungsi	Bogor	Bodetabek	8,387	5,565	Supermarket	Sep.05	JIL
52	R70	Jl. Pengayoman	Makassar	South Sulawesi	8,185	7,444	Supermarket	Sep.05	Private
53	R71	Jl. Juanda	Bogor	Bodetabek	7,569	5,436	Supermarket	Dez.05	Private
54	R74	Jl. R.E Martadinata, Cikarang	Bekasi	Bodetabek	6,277	5,058	Supermarket	Sep.06	Private
55	R75	Jl. Veteran, Kel Kota Baru	Serang	West Java	11,202	8,048	Supermarket	Okt.06	Private
56	R77	Jl. A.Yani. No. 1, Kel Benteng Pasar Atas	Bukit Tinggi	West Sumatera	4,661	4,217	Supermarket	Jul.07	Private
57	R78	Jl. Jend. A Yani	Baturaja	South Sumatera	8,626	6,834	Supermarket	Aug.07	Owned
58	R79	Jl. Perintis Kemerdekaan	Makassar	South Sulawesi	10,484	8,595	Supermarket	Sep.07	JIL
59	R80	Jl. Jend. Sudirman	Dumai, Kep. Riau	Sumatra Riau	8,052	6,493	Supermarket	Dez.07	Owned
60	R81	Jl. Mulawarman	Bontang, Kaltim	East Kalimantan	7,616	4,915	Supermarket	Dez.07	Owned
61	R82	Jl. Raya Seseatan	Bali	Bali-NT	11,881	7,610	Supermarket	Jun.07	Private
62	R83	Jl. Adi Sucipto	Banyuwangi	East Java	8,599	4,864	Supermarket	Jun.07	Private
63	R85	Jl. Jenderal Sudirman	Duri	Sumatra Riau	7,552	6,348	Supermarket	Jul.08	JIL
64	R86	Jl. Lintas Timur	Kerinci	Sumatra Riau	6,484	5,513	Supermarket	Jul.08	JIL
65	R88	Jl. Jend. Sudirman	Paya Kumbuh	West Sumatera	6,156	3,978	Supermarket	Mär.09	Private
66	R89	Jl. Jend. Sudirman	Tebing Tinggi	North Sumatera	9,192	6,437	Supermarket	Sep.08	Owned
67	R90	Jl. Jend. Sudirman	Kotabumi	Sumatra Lampung	8,960	4,781	Supermarket	Sep.08	Owned
68	R91	Jl Raya Abepura, Kec Jayapura Selatan	Abepura	Papua	11,315	8,735	Supermarket	Mai.10	Owned
69	R93	Jl. Latumenten No 33	West Jakarta	Jakarta	3,099	1,994	None	Aug.09	Private
70	R94	Jl. M. Yamin	Samarinda	East Kalimantan	16,266	11,356	Supermarket	Aug.10	JIL
71	R96	Jl. HR. Subrantas	Panam	Sumatra Riau	16,850	11,697	None	Dez.10	Owned
72	R97	Jl. Raya Padalarang, Kab. Bandung Barat	Padalarang	West Java	7,739	6,265	Supermarket	Mär.11	JIL
73	R98	Jl. Panglima Sudirman	Kediri	East Java	10,320	7,218	None	Jul.11	JIL

74	R99	Jl. Guntur, Kel Pakuwon	Garut	West Java	11,230	10,109	Supermarket	Aug.11	JIL
75	R100	Jl. Raya Plered	Cirebon	West Java	11,400	9,600	Supermarket	Mär.12	JIL
76	R101	Jl. Z.A. Pagar Alam	Lampung	Sumatra Lampung	10,600	7,957	Supermarket	Apr.12	JIL
77	R102	Jl. Pasar Kebayoran Lama	South Jakarta	Jakarta	8,806	8,374	Supermarket	Mai.12	Government
78	R103	Jl. Jend Ahmad Yani, Kel Klademak	Sorong	Papua	11,873	11,224	Supermarket	Dez.12	JIL
79	R105	Jl. Raya Parung Bogor, Kab. Bogor	Bogor	West Java	8,800	5,700	Supermarket	Jul.12	Owned
80	R106	Jl. Siliwangi/ Kamp. Sekarwangi, Cibadak	Sukabumi	West Java	8,138	7,375	Supermarket	Nov.12	JIL
81	R107	Jl.H.R Lukman, Link. Kayu Manis	Bogor	Bodetabek	12,656	11,447	Supermarket	Mär.13	JIL
82	R109	Jl. Raya Teratai Putih, Duren Sawit	Jakarta	Jakarta	6,454	5,731	Supermarket	Nov.12	JIL
83	R110	Jl. DR. Sutomo, Kel Noyontaan Pekalongan	Pekalongan	Central Java	8,340	8,340	Supermarket	Mai.13	Owned
84	R111	Maluku Mall City, Jl Sultan Hassanudin	Ambon	Maluku	4,979	3,041	None	July-13	Private
85	R114	Jl.Bogor Baru Kel Kedaung Jaya	Bogor	Bodetabek	6,410	4,183	Supermarket	July-13	JIL
86	R119	Mall Dinoyo City Square JL. MT Haryono	Malang	East Java	9,715	9,208	None	June-15	Private
87	R120	Jl. Slamet Riyadi, Laweyan, Solo	Solo	Central Java	9,376	5,743	None	May-16	JIL
88	R121	Jl. Raya Tajur RT 02/02, Sindangsari, Bogor Timur	Tajur	Bodetabek	4,603	3,043	Supermarket	Jun.16	JIL
89	R123	Jl. Boulevard kav. 9, Medan Satria, Bekasi	Bekasi	Bodetabek	3,113	2,724	None	May-17	Private
90	R124	Jl. Raya Serang no. 19 RT001/RW01, Cikupa	Tangerang	Bodetabek	7,740	6,155	Supermarket	May-17	JIL
91	R125	Jl. Matraman Raya No.173-175, Jakarta Timur	Jakarta	Jakarta	8,353	8,007	Supermarket	Dec-17	JIL
92	R126	Jl. Ir.H. Juanda No.115, Bekasi	Bekasi	Bodetabek	4,380	3,936	None	Dec-17	Private
93	R127	Jl. BSD Raya Utama, Tangerang (Q Big Mall)	Tangerang	Bodetabek	3,400	3,310	None	Dec-17	Private
94	R128	Jl. Alternatif Cibubur Cileungsi Km. 2-3, Jawa Barat	Cibubur	West Java	5,836	5,836	None	Apr.18	Private
95	R129	Jl. H.M. Joyomartono Bulak Kapal, Bekasi Timur	Bekasi	Bodetabek	4,168	4,168	None	Apr.18	Private
96	R130	Jl. Sultan Hamengkubuwono IX KM 25, Jakarta Timur	East Jakarta	Jakarta	4,635	4,635	None	May-18	Private
97	R131	Jl. Magelang km 9,6, Tridadi, Sleman	Sleman	Central Java	4,228	3,890	None	Dec-18	Private
98	R132	Jl. Pahlawan, Kartoharjo, Kota Madiun, Jawa Timur	Madiun	East Java	4,076	3,620	None	Dec-18	Private
99	RB03	Jl. Pemuda; Jl. Jend Sudirman	Salatiga	Central Java	8,400	6,394	Supermarket	Mai.02	JIL
100	RB05	Jl. Tipar Gede No. 17	Sukabumi	West Java	10,351	5,708	Supermarket	Nov.90	Private
101	RB07	Jl. Pasuketan, Mal Cirebon, Lt. 1	Cirebon	West Java	6,500	4,133	None	Sep.91	Private
102	RB09	Jl. Malioboro No. 124	Jogyakarta	Central Java	5,510	2,502	None	Feb.93	Owned
103	RB10	Jl. Kusuma Bangsa, THR Mal Surabaya	Surabaya	East Java	3,703	2,929	None	Okt.93	Private
104	RB11	Jl. Simpang Lima, Mal Citraland, Lt. 1	Semarang	Central Java	5,875	4,300	None	Nov.93	Private
105	RB12	Jl. Rio No. 1, Cimahi Mekar	Bandung	West Java	5,421	4,416	Supermarket	Dez.93	Owned
106	RB13	Jl. Merdeka Timur, Plaza Mataraman	Malang	East Java	13,199	7,597	Supermarket	Nov.94	Private
107	RB14	Jl. Taman Jayeng Romo, Jembatan Merah	Surabaya	East Java	6,264	4,683	None	Nov.94	Private
108	RB16	Jl. Gubernur Suryo, Plaza Multi Sarana	Gresik	East Java	14,390	9,044	Supermarket	Nov.95	JIL
109	RB17	Jl. Jend. A. Yani 66-74	Jogyakarta	Central Java	6,139	3,871	None	Nov.00	Owned
110	RB20	Jl. Diponegoro No. 103-AI	Denpasar	Bali-NT	10,370	6,620	Supermarket	Jul.97	JIL
111	RB21	Jl. Komplek Jodoh, Marina	Batam	Sumatra Batam	9,760	6,069	Supermarket	Sep.01	JIL
112	RB22	Jl. Bungur Asih	Surabaya	East Java	9,296	4,415	None	Dez.97	Owned
113	RB23	Jl. Raya Krian, Kompleks Pasar Krian	Sidoarjo	East Java	4,585	3,364	Supermarket	Aug.99	Owned
114	RB26	Jl. Wiratno	Tanjung Pinang	Sumatra Batam	15,334	7,332	Supermarket	Mai.02	Owned
115	RB27	Jl. Diponegoro	Sidoarjo	East Java	13,000	7,323	Supermarket	Okt.01	JIL
116	RB28	Jl. Simpang Tujuh	Kudus	East Java	6,298	4,876	None	Aug.01	JIL
117	RB29	Jl. Jend. Sudirman	Denpasar	Bali-NT	8,568	5,264	Supermarket	Okt.01	JIL
118	RB30	Jl. Kawasan Komersil Muka Kuning	Batam	Sumatra Batam	10,915	10,347	Supermarket	Aug.02	Private
119	RB31	Jl. Bubutan no 1-7	Surabaya	East Java	4,698	3,539	None	Sep.06	Private
Total					994,441	731,767			

Last Update : March 2019

PT RAMAYANA LESTARI SENTOSA Tbk.

INCOME STATEMENT

as of 31 March 2018 & 2019 (Unaudit)

(Expressed in Millions Rupiah)

Description	3M18	% Sales	3M19	% Sales	% Change
REVENUES					
Outright sales	893,413	58.8%	876,736	56.8%	-1.9%
Consignment sales	626,869	41.2%	667,198	43.2%	6.4%
Cost of consignment sales	469,984	75.0%	497,882	74.6%	5.9%
Commission on consignment sales	156,885	25.0%	169,316	25.4%	7.9%
TOTAL REVENUES	1,050,298	69.1%	1,046,052	67.8%	-0.4%
COST OF OUTRIGHT SALES	634,669	71.0%	602,225	68.7%	-5.1%
GROSS PROFIT	415,629	27.3%	443,827	28.7%	6.8%
Selling expenses	84,996	5.6%	92,838	6.0%	9.2%
General and administrative expenses	340,429	22.4%	335,287	21.7%	-1.5%
Other income	2,704	0.2%	29,532	1.9%	992.2%
Other expense	297	0.0%	2,870	0.2%	866.3%
INCOME FROM OPERATIONS	-7,389	-0.5%	42,364	2.7%	-673.3%
Finance income	23,443	1.5%	33,607	2.2%	43.4%
INCOME BEFORE INCOME TAX	16,054	1.1%	75,971	4.9%	373.2%
Income tax expense - net	1,382	0.1%	-1,532	-0.1%	-210.9%
INCOME FOR THE YEAR	14,672	1.0%	77,503	5.0%	428.2%

OPERATING EXPENSES

Description	3M18	% Sales	3M19	% Sales	% Change
Salaries & allowances	149,135	9.8%	144,501	9.4%	-3.1%
Electricity & energy	59,529	3.9%	52,076	3.4%	-12.5%
Rental expense (net)	48,174	3.2%	50,852	3.3%	5.6%
Depreciation	44,651	2.9%	45,960	3.0%	2.9%
Repairs & maintenance	45,099	3.0%	50,759	3.3%	12.6%
Transportation	12,972	0.9%	11,986	0.8%	-7.6%
Plastic Bags	4,041	0.3%	3,432	0.2%	-15.1%
Promotion	16,780	1.1%	24,635	1.6%	46.8%
Credit Card Charges	948	0.1%	1,792	0.1%	89.0%
Contributions & retributions	2,922	0.2%	2,524	0.2%	-13.6%
Tax and Licence	1,470	0.1%	3,075	0.2%	109.2%
Insurance	6,383	0.4%	6,632	0.4%	3.9%
Telecommunications	1,182	0.1%	1,166	0.1%	-1.4%
Supplies	7,361	0.5%	4,434	0.3%	-39.8%
Donation & Entertainment	3,109	0.2%	2,065	0.1%	-33.6%
Bank charges	839	0.1%	914	0.1%	8.9%
Jamsostek	6,914	0.5%	8,047	0.5%	16.4%
Stationery	5,436	0.4%	4,728	0.3%	-13.0%
Traveling	3,421	0.2%	4,006	0.3%	17.1%
Security	2,691	0.2%	2,268	0.1%	-15.7%
Professional fees	-	0.0%	645	0.0%	#DIV/0!
Others	2,368	0.2%	1,628	0.1%	-31.3%
Total	425,425	28.0%	428,125	27.7%	0.6%

PT RAMAYANA LESTARI SENTOSA Tbk.

BALANCE SHEET

as of 31 March 2018 & 2019 (Unaudit)

(Expressed in Millions Rupiah)

Description	3M18	% Asset	3M19	% Asset	% Change
Current assets					
Cash & cash equivalents	311,793	6.4%	1,145,724	21.8%	267.5%
Time deposits	1,458,530	30.1%	972,900	18.5%	-33.3%
Short-term investment	128,004	2.6%	83,943	1.6%	-34.4%
Account receivable					
Trade	10,827	0.2%	53,871	1.0%	397.6%
Others	31,913	0.7%	31,492	0.6%	-1.3%
Inventories	982,169	20.2%	1,076,424	20.5%	9.6%
Advances and prepaid expenses	52,280	1.1%	91,422	1.7%	74.9%
Prepaid tax	14,205	0.3%	13,168	0.3%	-7.3%
Current portion of long-term rent	102,698	2.1%	88,180	1.7%	-14.1%
Total current assets	3,092,419	63.7%	3,557,124	67.8%	15.0%
Non-current assets					
Prepaid fixed assets	1,213,703	25.0%	1,153,645	22.0%	-4.9%
Prepaid Long-term rent - net current portion	436,424	9.0%	422,214	8.0%	-3.3%
Security deposits	31,336	0.6%	32,940	0.6%	5.1%
Intangible assets	14,181	0.3%	11,560	0.2%	-18.5%
Deferred tax asset - net	57,031	1.2%	54,561	1.0%	-4.3%
Other non current assets	6,023	0.1%	18,173	0.3%	201.7%
Total non current assets	1,758,698	36.3%	1,693,093	32.2%	-3.7%
Total assets	4,851,117	100.0%	5,250,217	100.0%	8.2%

Description	3M18	% Liab & Equity	3M19	% Liab & Equity	% Change
Current liabilities					
Account payable					
Trade	917,515	18.9%	824,529	15.7%	-10.1%
Others	4,610	0.1%	57,318	1.1%	1143.3%
Accrued expenses	34,428	0.7%	48,866	0.9%	41.9%
Taxes payable	35,098	0.7%	76,069	1.4%	116.7%
Total current liabilities	991,651	20.4%	1,006,782	19.2%	1.5%
Non current liabilities					
Estimated liabilities for employees	350,077	7.2%	321,845	6.1%	-8.1%
Total non current liabilities	350,077	7.2%	321,845	6.1%	-8.1%
Total Liabilities	1,341,728	27.7%	1,328,627	25.3%	-1.0%
Stockholders' equity					
Capital stock- Rp50 par value per share					
Authorized - 28,000,000,000 shares; Issued and fully paid- 7,096,000,000 shares	354,800	7.3%	354,800	6.8%	0.0%
Additional paid-in capital - net	132,494	2.7%	132,494	2.5%	0.0%
Treasury share - 353,181,100 shares	-339,861	-7.0%	-321,647	-6.1%	-5.4%
Other Comprehensive Income	-64,324	-1.3%	-51,360	-1.0%	-20.2%
Retained earnings					
Appropriated	70,000	1.4%	70,000	1.3%	0.0%
Unappropriated	3,356,280	69.2%	3,737,303	71.2%	11.4%
Total stockholders' equity	3,509,389	72.3%	3,921,590	74.7%	11.7%
Total liabilities & equity	4,851,117	100.0%	5,250,217	100.0%	8.2%

PT RAMAYANA LESTARI SENTOSA Tbk.
INCOME STATEMENT
as of 31 December 2017 & 2018 (Audited)
(Expressed in Millions Rupiah)

Description	FY17	% Sales	FY18	% Sales	% Change
REVENUES					
Outright sales	4,786,508	58.8%	4,805,123	56.3%	0.4%
Consignment sales	3,359,349	41.2%	3,733,611	43.7%	11.1%
Cost of consignment sales	2,523,129	75.1%	2,799,181	75.0%	10.9%
Commission on consignment sales	836,220	24.9%	934,430	25.0%	11.7%
TOTAL REVENUES	5,622,728	69.0%	5,739,553	67.2%	2.1%
COST OF OUTRIGHT SALES	3,410,434	71.3%	3,232,948	67.3%	-5.2%
GROSS PROFIT	2,212,294	27.2%	2,506,605	29.4%	13.3%
Selling expenses	379,456	4.7%	425,171	5.0%	12.0%
General and administrative expenses	1,476,485	18.1%	1,473,612	17.3%	-0.2%
Other income	20,432	0.3%	18,421	0.2%	-9.8%
Other expense	1	0.0%	19,295	0.2%	#####
INCOME FROM OPERATIONS	376,784	4.6%	606,948	7.1%	61.1%
Finance income	89,808	1.1%	110,224	1.3%	22.7%
INCOME BEFORE INCOME TAX	466,592	5.7%	717,172	8.4%	53.7%
Income tax expense - net	60,012	0.7%	130,067	1.5%	116.7%
INCOME FOR THE YEAR	406,580	5.0%	587,105	6.9%	44.4%

OPERATING EXPENSES

Description	FY17	% Sales	FY18	% Sales	% Change
Salaries & allowances	670,210	8.2%	620,070	7.3%	-7.5%
Electricity & energy	262,880	3.2%	257,691	3.0%	-2.0%
Rental expense (net)	181,929	2.2%	222,749	2.6%	22.4%
Depreciation	183,684	2.3%	175,362	2.1%	-4.5%
Repairs & maintenance	154,498	1.9%	176,507	2.1%	14.2%
Transportation	62,085	0.8%	59,256	0.7%	-4.6%
Plastic Bags	25,108	0.3%	23,623	0.3%	-5.9%
Promotion	90,635	1.1%	104,065	1.2%	14.8%
Credit Card Charges	7,214	0.1%	5,758	0.1%	-20.2%
Contributions & retributions	10,607	0.1%	11,345	0.1%	7.0%
Tax and Licence	32,763	0.4%	72,069	0.8%	120.0%
Insurance	26,858	0.3%	26,411	0.3%	-1.7%
Supplies	37,055	0.5%	27,001	0.3%	-27.1%
Jamsostek	24,659	0.3%	29,513	0.3%	19.7%
Stationery	22,505	0.3%	22,905	0.3%	1.8%
Traveling	14,299	0.2%	15,382	0.2%	7.6%
Security	11,407	0.1%	13,000	0.2%	14.0%
Professional fees & Traveling	4,891	0.1%	3,922	0.0%	-19.8%
Others	32,654	0.4%	32,154	0.4%	-1.5%
Total	1,855,941	22.8%	1,898,783	22.2%	2.3%

PT RAMAYANA LESTARI SENTOSA Tbk.
BALANCE SHEET
as of 31 December 2017 & 2018 (Audited)
(Expressed in Millions Rupiah)

Description	FY17	% Asset	FY18	% Asset	% Change
Current assets					
Cash & cash equivalents	751,901	15.4%	1,950,775	37.2%	159.4%
Time deposits	1,279,068	26.1%	464,656	8.9%	-63.7%
Short-term investment	127,509	2.6%	86,068	1.6%	-32.5%
Account receivable					
Trade	10,046	0.2%	16,346	0.3%	62.7%
Others	47,076	1.0%	21,429	0.4%	-54.5%
Inventories	740,993	15.1%	859,767	16.4%	16.0%
Advances and prepaid expenses	35,531	0.7%	67,868	1.3%	91.0%
Current portion of long-term rent	101,372	2.1%	90,579	1.7%	-10.6%
Total current assets	3,093,496	63.2%	3,557,488	67.9%	15.0%
Non-current assets					
Prepaid fixed assets	1,235,256	25.3%	1,164,225	22.2%	-5.8%
Prepaid Long-term rent - net current portion	452,372	9.2%	407,822	7.8%	-9.8%
Security deposits	30,602	0.6%	31,706	0.6%	3.6%
Intangible assets	14,669	0.3%	12,217	0.2%	-16.7%
Deferred tax asset - net	58,537	1.2%	51,349	1.0%	-12.3%
Other non current assets	6,990	0.1%	18,240	0.3%	160.9%
Total non current assets	1,798,426	36.8%	1,685,559	32.1%	-6.3%
Total assets	4,891,922	100.0%	5,243,047	100.0%	7.2%

Description	FY17	% Liab & Equity	FY18	% Liab & Equity	% Change
Current liabilities					
Account payable					
Trade	949,543	19.4%	909,334	17.3%	-4.2%
Others	6,878	0.1%	31,468	0.6%	357.5%
Accrued expenses	43,528	0.9%	55,193	1.1%	26.8%
Taxes payable	48,691	1.0%	97,100	1.9%	99.4%
Total current liabilities	1,048,640	21.4%	1,093,095	20.8%	4.2%
Non current liabilities					
Estimated liabilities for employees	348,937	7.1%	322,487	6.2%	-7.6%
Total non current liabilities	348,937	7.1%	322,487	6.2%	-7.6%
Total Liabilities	1,397,577	28.6%	1,415,582	27.0%	1.3%
Stockholders' equity					
Capital stock- Rp50 par value per share					
Authorized - 28,000,000,000 shares; Issued and fully paid- 7,096,000,000 shares	354,800	7.3%	354,800	6.8%	0.0%
Additional paid-in capital - net	132,494	2.7%	132,494	2.5%	0.0%
Treasury share - 373,181,100 shares	-339,861	-6.9%	-339,861	-6.5%	0.0%
Other Comprehensive Income	-64,696	-1.3%	-49,768	-0.9%	-23.1%
Retained earnings					
Appropriated	70,000	1.4%	70,000	1.3%	0.0%
Unappropriated	3,341,608	68.3%	3,659,800	69.8%	9.5%
Total stockholders' equity	3,494,345	71.4%	3,827,465	73.0%	9.5%
Total liabilities & equity	4,891,922	100.0%	5,243,047	100.0%	7.2%

INSIDE THE STORE



MEN APPAREL



LADIES APPAREL



KIDS APPAREL



SHOES & BAGS



APPAREL CONSIGNMENT



APPAREL CONSIGNMENT

INSIDE THE STORE



SHOES CONSIGNMENT



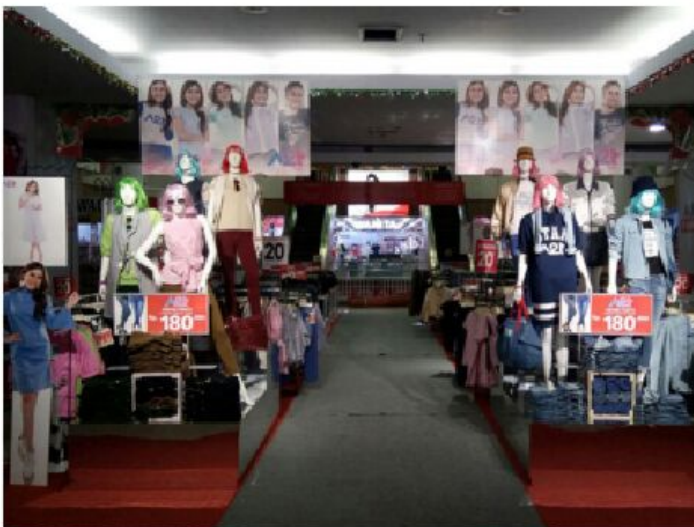
SHOES MART



HIJAB



DISNEY



A2T



JD

SPAR SUPERMARKET



STORE ENTRANCE



FRESH DEPT.



FOOD



NON-FOOD



MEMBER CARD



PRIVILEGE MEMBER CARD

NEW STORES



RAMAYANA PONDOK AREN



RAMAYANA KHI



RAMAYANA CIKUPA



RAMAYANA JATINEGARA



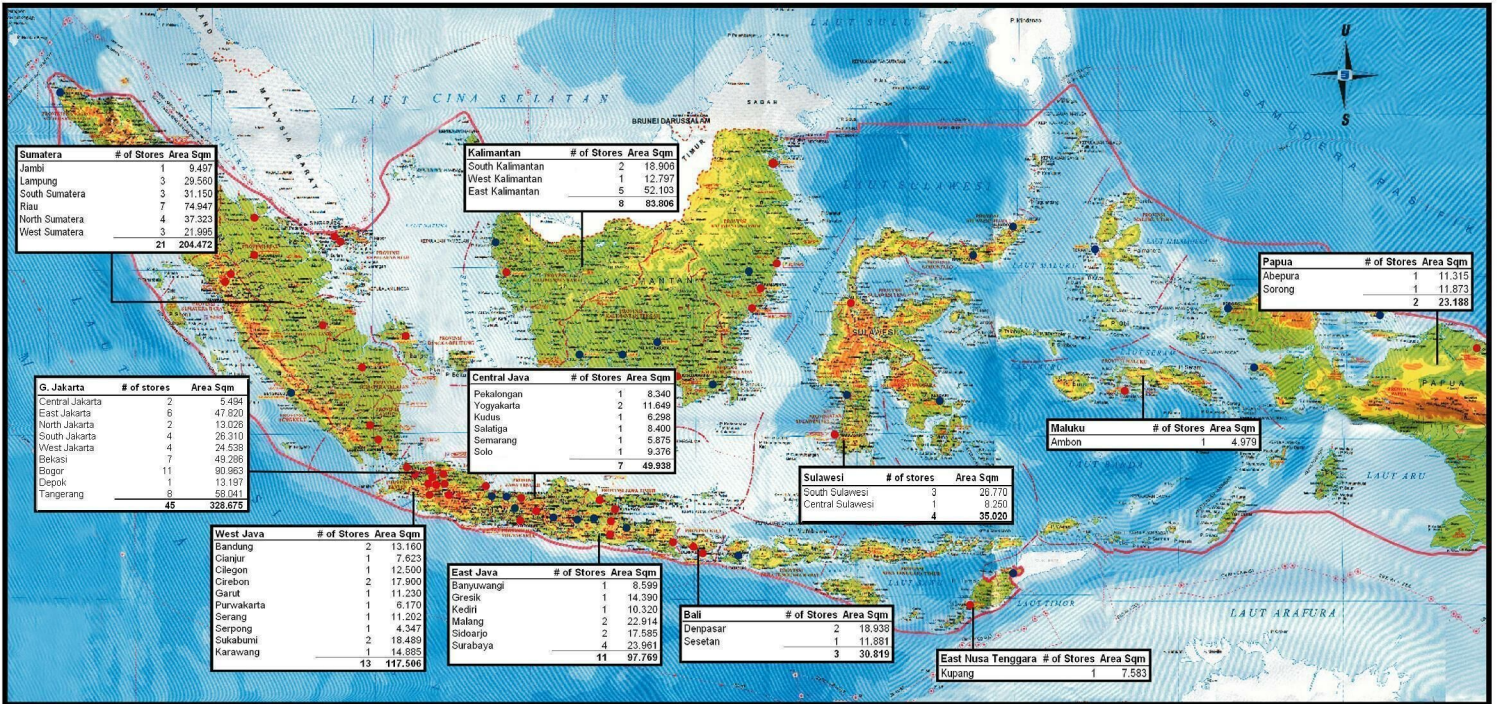
RAMAYANA BEKASI JUNCTION



RAMAYANA BSD

WHERE ARE WE ?

TOTAL RAMAYANA STORES		
119	Stores	
994.441	Area Sqm	



- FUTURE EXPANSION
- EXISTING STORE

